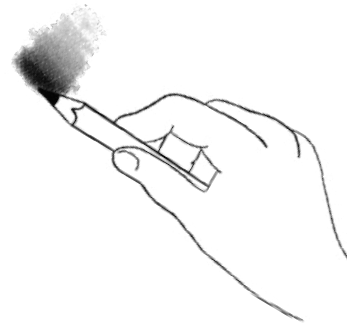


Holding a pencil to shade



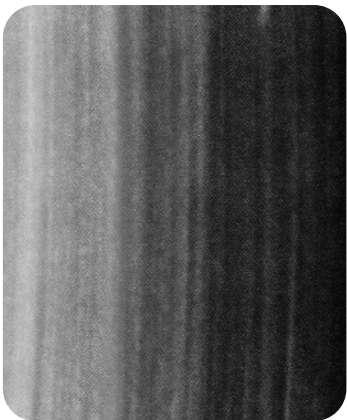
detail grip
(writing grip)



shading grip

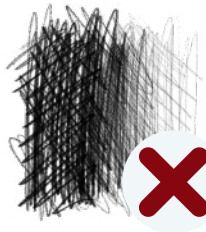
Tone

How light or dark something is.



The four rules of shading

1. Use the side of the pencil.
2. Work in one direction.
3. Press evenly.
4. Leave no gaps.



Texture

The way that something feels when it is touched.



wrinkly



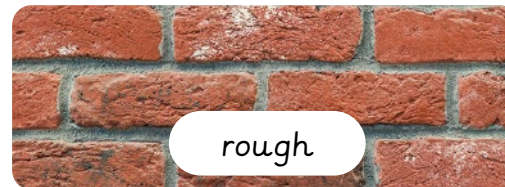
smooth



prickly



fluffy



rough

Artists

- Käthe Kollwitz.
- Max Ernst.
- Sari Deines.
- Saeed Akhtar.

Drawing materials

- Chalk.



- Crayon.



- Oil pastel.



- Soft pastel.



- Charcoal.



- Graphite sticks.

